

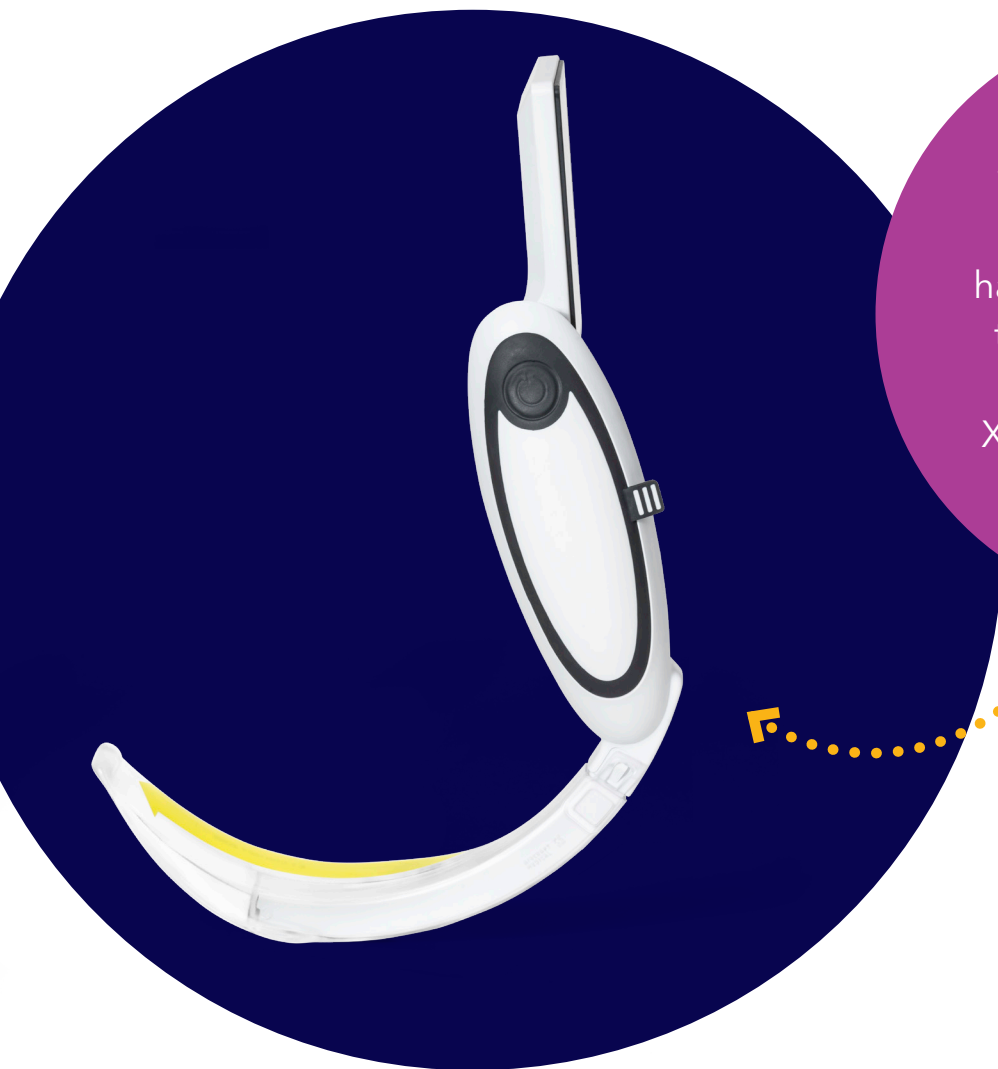


The hyperangulated
McGRATH™
MAC X3 blade.

Get a handle
on the most
difficult airways.

For use with the McGRATH MAC™
video laryngoscope

The McGRATH™ MAC X3 blade. Designed for difficult airways. Made for confident intubation.



When you anticipate a difficult airway, we have you covered. With the McGRATH™ MAC video laryngoscope X3 blade, you'll always be prepared.

The McGRATH™ MAC X3 blade achieved grade 1 or 2 views in 97% of cases.¹

The McGRATH™ MAC X3 blade is designed to address the most challenging intubations.

While the standard McGRATH™ MAC Macintosh blades are designed for a straightforward airway in everyday practice, we crafted the McGRATH™ MAC X3 blade curvature specifically for the most difficult airways.

It pairs the same slim blade profile you know and love with a hyperangulated curve, which supports intubation of anterior airways and patients where minimal manipulation is required.

Its acute curvature mirrors the anatomy, promoting correct positioning and optimal tube placement.

With the McGRATH™ MAC X3 blade, you get the visual clarity you need of the oral cavity without losing sight of your patient.

Make your first intubation attempt your best – even for difficult airways – with the McGRATH™ MAC X3 blade and the McGRATH™ MAC™ video laryngoscope.^{2,3}

The convenient solution for complicated intubations

Conquer complicated intubations when you use the McGRATH™ MAC X3 blade in combination with a Shiley™ endotracheal tube with TaperGuard™ cuff and preloaded stylet.

The acute curvature of the McGRATH™ MAC X3 blade requires the use of a stylet – and our Shiley™ endotracheal tube with TaperGuard™ cuff comes with a stylet preloaded.

Shown to deliver a higher level of patient comfort and protection compared to the previous barrel-shaped cuff design, our endotracheal tube featuring a unique taper-shaped cuff and a preloaded stylet also helps improve compliance, promote efficiencies, and minimize waste.

- Reduces cuff pressure on the tracheal wall by 29%⁴
- Reduces aspiration⁵ and incidence of sore throat⁶
- Comes with a preloaded stylet in one sterile, easy-to-access package



Ordering information

McGRATH™ MAC video laryngoscope

SKU	Description	Quantity
X3-003-000	McGRATH™ MAC X blade size 3	10/box
301-000-000	McGRATH™ MAC handle	1/each
340-000-000	250-minute Battery Pack	1/each
300-000-100	Carry case	1/each

Shiley™ oral/nasal ETT with TaperGuard™ cuff and preloaded stylet

CFN with stylet	I.D. (mm)	O.D. (mm)	Length (mm)	Cuff Ø (mm)
18750S	5.0	6.9	240	17.4
18755S	5.5	7.5	270	17.4
18760S	6.0	8.2	280	20.6
18765S	6.5	8.9	290	20.6
18770S	7.0	9.5	300	25.4
18775S	7.5	10.2	310	25.4
18780S	8.0	10.8	320	25.4
18785S	8.5	11.4	330	28.6
18790S	9.0	12.1	335	28.6
18795S	9.5	12.8	335	28.6
18710S	10.0	13.5	335	28.6

Carton quantity 10. All tubes are delivered sterile packed, for single use only.

Difficult intubations call for the right tools.

Discover how the McGRATH™ MAC X3 blade can help you manage your most challenging intubations. Scan the QR code to learn more.



Double down on difficult airways – two products, one powerful solution.

Be prepared for anticipated difficult airways with the McGRATH™ MAC X3 blade and Shiley™ endotracheal tube featuring TaperGuard™ cuff technology with preloaded stylet. Scan the QR code to learn more.



1. Zhang J, Tan LZ, Toh H, et al. Comparing the first-attempt tracheal intubation success of the hyperangulated McGrath® X-blade vs the Macintosh-type CMAC videolaryngoscope in patients with cervical immobilization: a two-centre randomized controlled trial. *Journal of Clinical Monitoring and Computing*. 2021;36(4):1139-1145. doi:10.1007/s10877-021-00746-5
2. Kleine-Brueggeney M, Greif R, Schoettker P, Savoldelli GL, Nabecker S, Theiler LG. Evaluation of six video laryngoscopes in 720 patients with a simulated difficult airway: a multicentre randomized controlled trial. *Br J Anaesth*. 2016;116(5):670-9.
3. Kriege 2017_Evaluation of the McGrath MAC and Macintosh laryngoscope for tracheal intubation in 2000 patients undergoing general anaesthesia: the randomized multicenter EMMA trial study protocol; *BMJ Open* 2017;7:e016907
4. Lichtenthal PR, Wood L, Wong A, Borg U. Pressure applied to tracheal wall by barrel and taper shaped cuffs. Paper presented at Annual Meeting of the American Society of Anesthesiologists; October 15-19, 2011; Chicago, IL. Abstract A1054.
5. D'Haese J, De Keukeleire T, Remory I, Van Rompaey K, Umbrain V, Poelaert J. Assessment of intraoperative microaspiration: does a modified cuff shape improve sealing? *Acta Anaesthesiol Scand*. 2013;57(7):873-80.
6. Chang JE, Kim H, Han SH, Lee JM, Ji S, Hwang JY. Effect of endotracheal tube cuff shape on postoperative sore throat after endotracheal intubation. *Anesth Analg*. 2017;125(4):1,240-1,245.

For trained personnel only. For specific indications and instructions for use, please refer to the product manual.

6135 Gunbarrel Avenue
Boulder, CO 80301
800.635.5267
[medtronic.com/covidien](https://www.medtronic.com/covidien)

©2023 Medtronic. Medtronic, Medtronic logo, and Engineering the extraordinary are trademarks of Medtronic. All other brands are trademarks of a Medtronic company. 03/2023 - US-RE-2200555 - [WF#7725002]

Medtronic
Life-Assist
Helping Heroes Save Lives 